

## STEPHAN UNIVERSAL MACHINES

More than universal batch cookers





## UNCOMPROMISING TOP-CLASS PERFORMANCE OF THE STEPHAN UNIVERSAL MACHINES

### MORE THAN UNIVERSAL BATCH COOKERS

STEPHAN stands for more than 60 years of experience in manufacturing plants and machines. In particular the STEPHAN Universal Machines have always impressed as flexible process units.

The STEPHAN Universal Machines handle almost all the tasks involved in the production of processed cheese, convenience products and confectionary: from mixing and chopping, emulsifying and vacuum deaeration to heating and cooling.

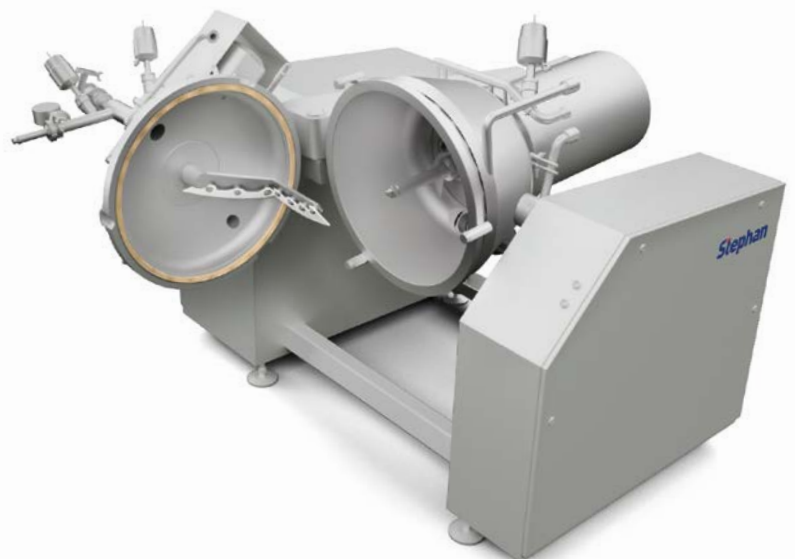
The STEPHAN Universal Machines all share one important characteristic: versatility.

These multi-functional batch machines, all of which following the unique STEPHAN principle, can be relied upon to carry out the entire process with all production steps.



## ADVANTAGES FOR YOUR PRODUCTION:

- ✓ EASY FILLING AND EMPTYING
- ✓ EFFECTIVE CUTTING AND MIXING
- ✓ INDIRECT AND/OR DIRECT HEATING
- ✓ HIGH HOURLY OUTPUT WITH SHORT BATCH TIMES
- ✓ EASY TO OPERATE
- ✓ EASY TO CLEAN
- ✓ COMPACT DESIGN





## APPLICATIONS AND PROCESSING STEPS

### APPLICATIONS: (SOME EXAMPLES)

- /// ALL KINDS OF PROCESSED CHEESE
- /// KETCHUP, MAYONNAISE
- /// READY MEALS
- /// SOUPS, SAUCES, DIPS
- /// ALMOND PASTE, MARZIPAN
- /// CONFECTIONERY FILLINGS

### PROCESSES:

- /// CUTTING
- /// MIXING
- /// EMULSIFYING
- /// VACUUM
- /// DIRECT HEATING
- /// HEATING AND COOLING (INDIRECT)

# DESIGN OF STEPHAN UNIVERSAL MACHINES

The STEPHAN Universal Machines are filled either via the open cover or via dosing valves. All processing steps are performed according to the proven STEPHAN principle: Each process is achieved in one machine (all-in-one), the power of the main motor is transferred directly to the knives – without gear! The rotating knives, reverse-acting scraper arm together with the interaction of the special bowl geometry achieve optimum processing of the product.

STEPHAN Universal Machines double up for many jobs. For example, if you want to produce processed cheese. STEPHAN UM processes pieces of butter and cheese up to a size of 2 kg without any problems. You don't need an additional grinder.

Also gentle treatment occurs when heating and cooling. The product may be heated indirectly with steam via a double jacket or fast and environmentally friendly by injecting direct steam via steam nozzles in the vessel bottom. But, don't forget you can use the cylinder jacket also to cool the product with cooling water.

The discharge of the product is made either via a discharge valve or by tilting the bowl through 90°.

## THE STEPHAN PRINCIPLE

Specially shaped working tools in combination with special bowl geometry results in a quick mixing of recipe ingredients and qualitatively reliable product results.





## TEST FACILITIES

The test facilities at our headquarters in Hameln (Germany) are available for feasibility studies and demonstration runs of the STEPHAN Universal Machines.

The machines shown are for illustrative purposes only. Actual machine construction may vary by specification.



**STEPHAN Universal Machine UM 70**

**Steam injection nozzles and knives**



**Discharge valve**



Type		UM 70	UM 130	UM 200
Batch size up to	l	55	90	170
Capacity up to	U/h	330	540	1020
Main motor	kW	20	29/33 (30)	50
Operating temperature	°C	95	95/125	95/125



STEPHAN Universal Machine UM 130



STEPHAN Universal Machine UM 200



STEPHAN Universal Machine UM 130  
overpressure execution



STEPHAN Universal Machine UM 200  
overpressure execution

# Stephan Machinery

## WORLD WIDE AT YOUR DISPOSAL

### HEADQUARTER

STEPHAN MACHINERY GMBH  
Stephanplatz 2  
31789 Hameln / GERMANY  
phone +49 5151 583-0  
fax +49 5151 583-189  
info@stephan-machinery.com  
www.stephan-machinery.com  
www.proxes-group.com

STEPHAN MACHINERY GMBH  
Branch Office Schwarzenbek  
Grabauer Straße 6-10  
21493 Schwarzenbek / GERMANY  
phone +49 4151 8987-0  
fax +49 4151 8987-10  
info@stephan-machinery.com  
www.stephan-machinery.com  
www.proxes-group.com

### SUBSIDIARIES/REPRESENTATIVES

#### BENELUX

STEPHAN BVBA  
Sluis 11  
9810 Nazareth / BELGIUM  
phone +32 9 3858355  
fax +32 9 3858187  
info@stephan-belgium.be

#### USA

PROXES INC.  
1385 Armour Boulevard  
Mundelein, IL 60060 / USA  
phone +1 847 2470182  
fax +1 847 2470184  
info.us@proxes-group.com

#### USA

PROXES INC.  
6 Frassetto Way, Unit D  
Lincoln Park, NJ 07035 / USA  
phone +1 973 7090691  
fax +1 973 7090644  
info.us@proxes-group.com

#### RUSSIA

OOO STEPHAN MACHINERY  
ST. PETERSBURG  
197110, St. Petersburg, RUSSIA  
Levashovskiy prospect, d. 15, litera A  
Office 203  
phone +7 812 7021185  
fax +7 812 7021187  
info.ru@stephan-machinery.com

#### FRANCE

PROXES FRANCE SARL  
ZAC du Mandinet  
1-3 rue des Campanules  
77185 Lognes / FRANCE  
phone +33 1 64805430  
fax +33 1 60067414  
info.fr@proxes-group.com

#### GREAT BRITAIN AND IRELAND

STEPHAN UK LTD  
Unit C5  
Tenth Avenue  
Zone 3 / Deeside Industrial Park  
Deeside/Flintshire  
CH5 2UA / UK  
Deeside  
phone +44 845 4560823  
fax +44 845 4560824  
info@stephan-uk.co.uk

#### POLAND

PROXES POLSKA SP. Z O.O.  
Wysogotowo  
ul. Skórzewska 35  
62-081 Przeźmierowo / POLAND  
phone +48 61 8171201  
fax +48 61 8171201  
info.pl@proxes-group.com

#### SINGAPORE

PROXES ASIA PACIFIC PTE LTD  
23 Tagore Lane  
#03-12 Tagore 23 Warehouse  
Singapore 787601 / SINGAPORE  
phone +65 6455 7670  
fax +65 6455 6220  
info.sg@proxes-group.com

#### SWITZERLAND

STEPHAN MACHINERY GMBH  
Gewerbstrasse 115  
5314 Kleindöttingen / SWITZERLAND  
phone +41 44 9550608  
fax +41 44 9550688  
stephan-machinery@bluewin.ch